

The background of the slide is a dense field of 3D-rendered numbers in various shades of blue and white. The numbers are scattered across the frame, creating a sense of depth and movement. Some numbers are larger and more prominent, while others are smaller and partially obscured. The lighting is soft, highlighting the three-dimensional nature of the digits.

Project
Update:
7/20/20

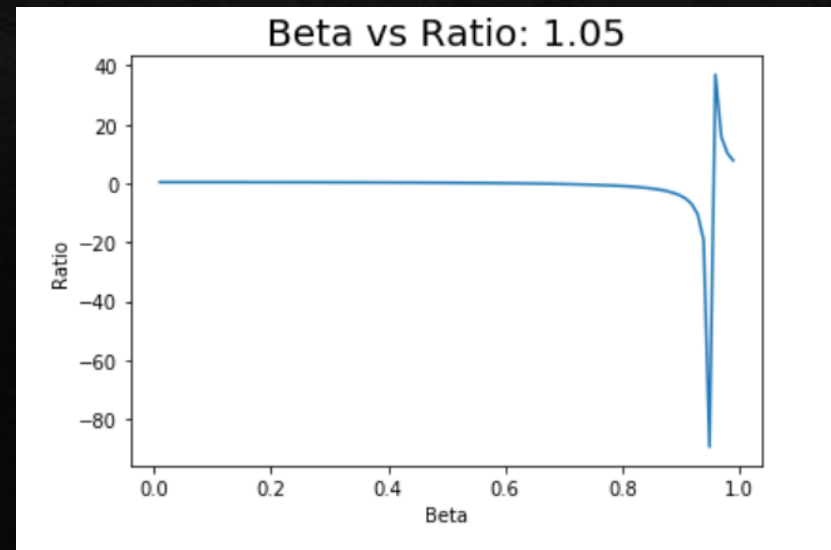
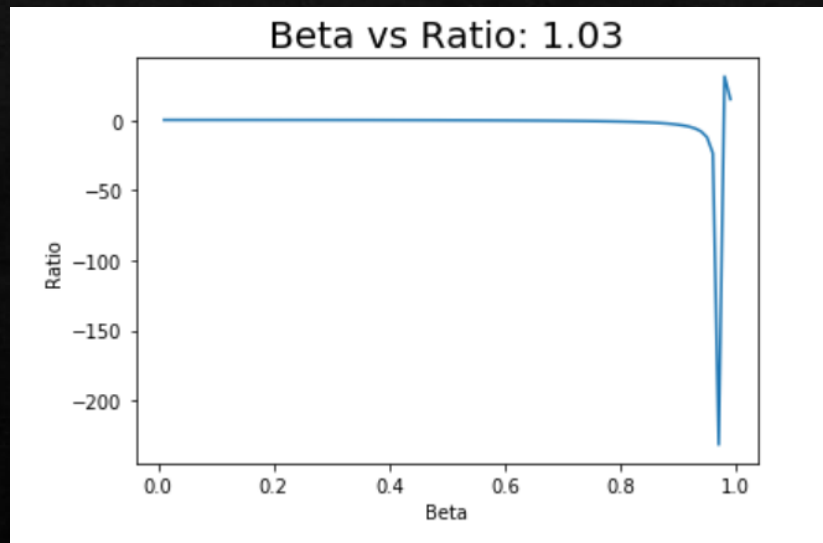
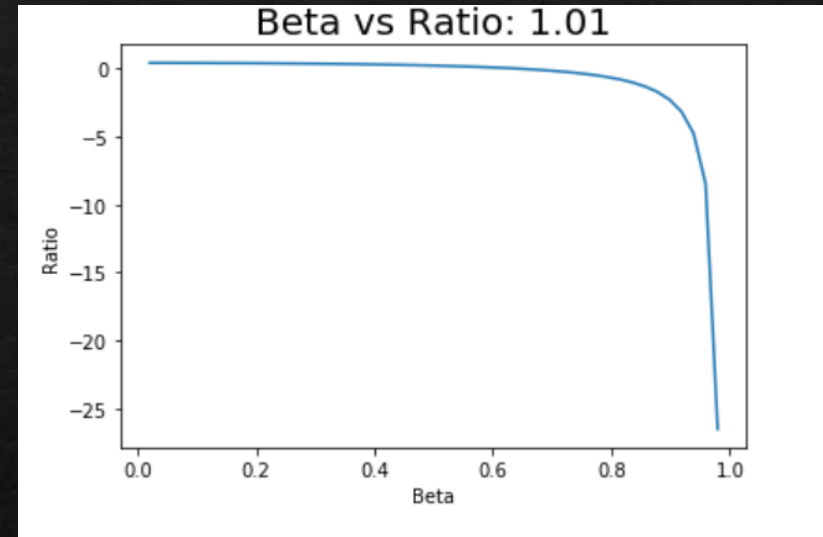
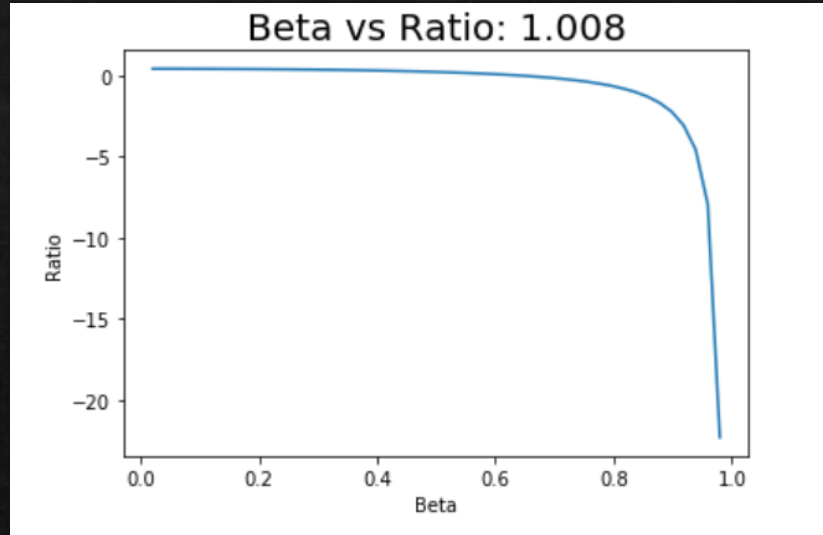
Sahnnee Shin

Equation

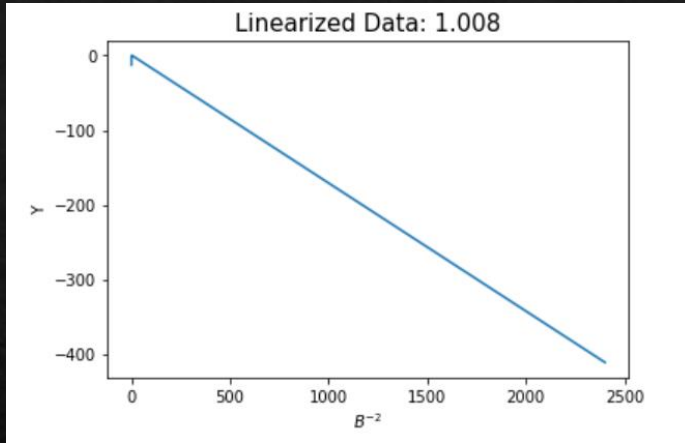
- ◇ N_1 is replaced with 1.56.
- ◇ N_2 is replaced with 1.008, 1.01, 1.03, and 1.05

$$\frac{1 - \frac{1}{(\beta^2 \cdot n_1^2)}}{1 - \frac{1}{(\beta^2 \cdot n_2^2)}}$$

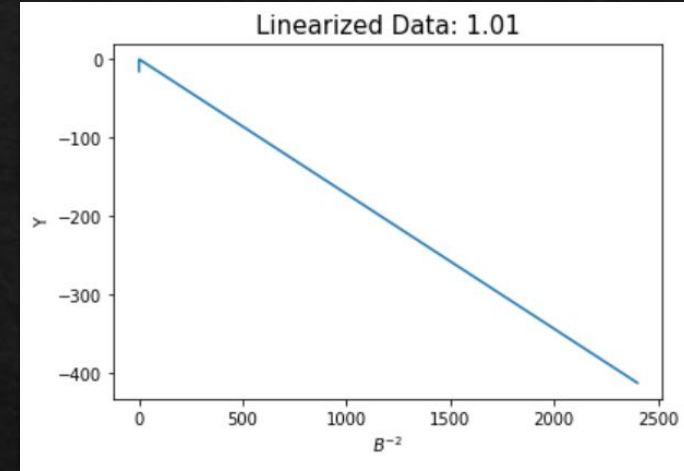
Intensity Ratio



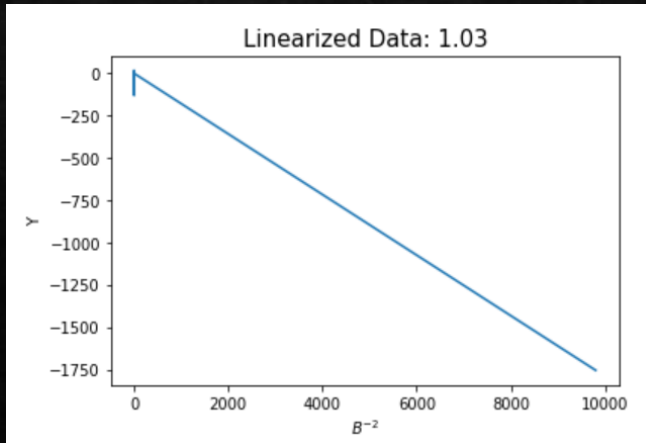
Linearized



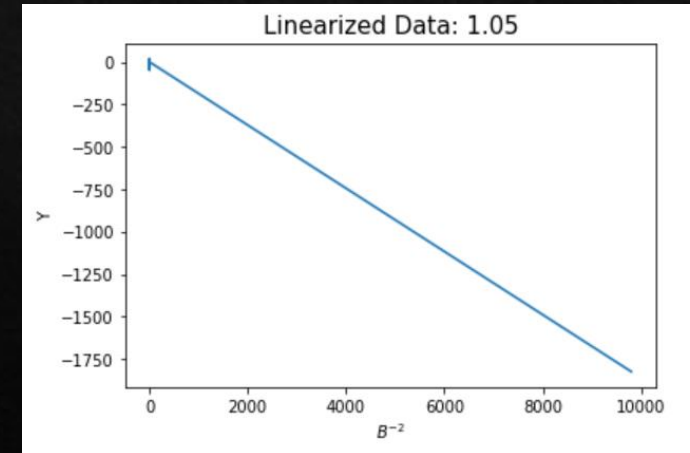
-0.1716



-0.1722

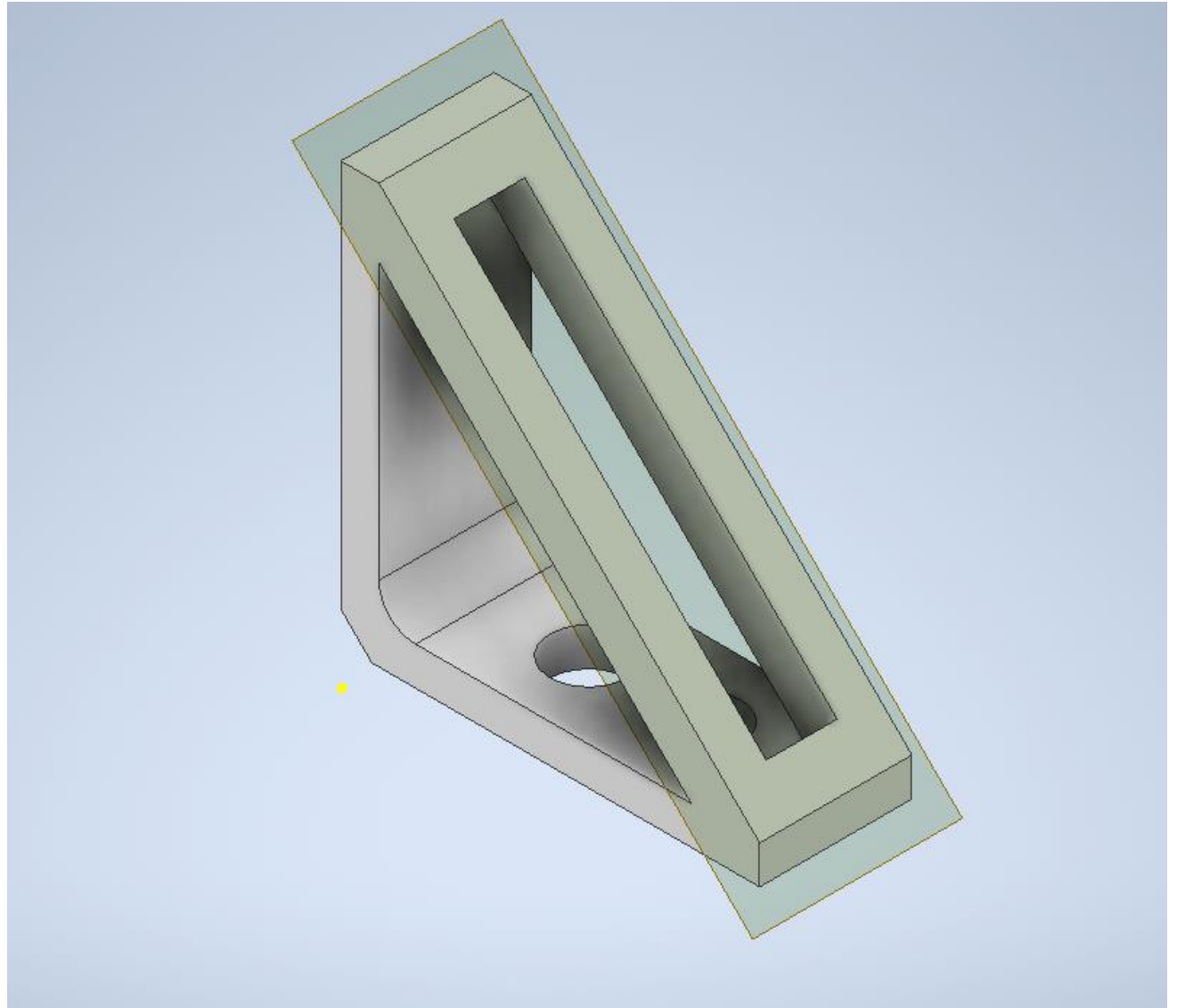


-0.1791



-0.1862

Autodesk
Inventor



Outlook

- ◇ Practice more with Autodesk.
 - ◇ Try the aerogel and fiberglass modeling and stress analysis.
- ◇ Research ideal aerogel and fiberglass length.