



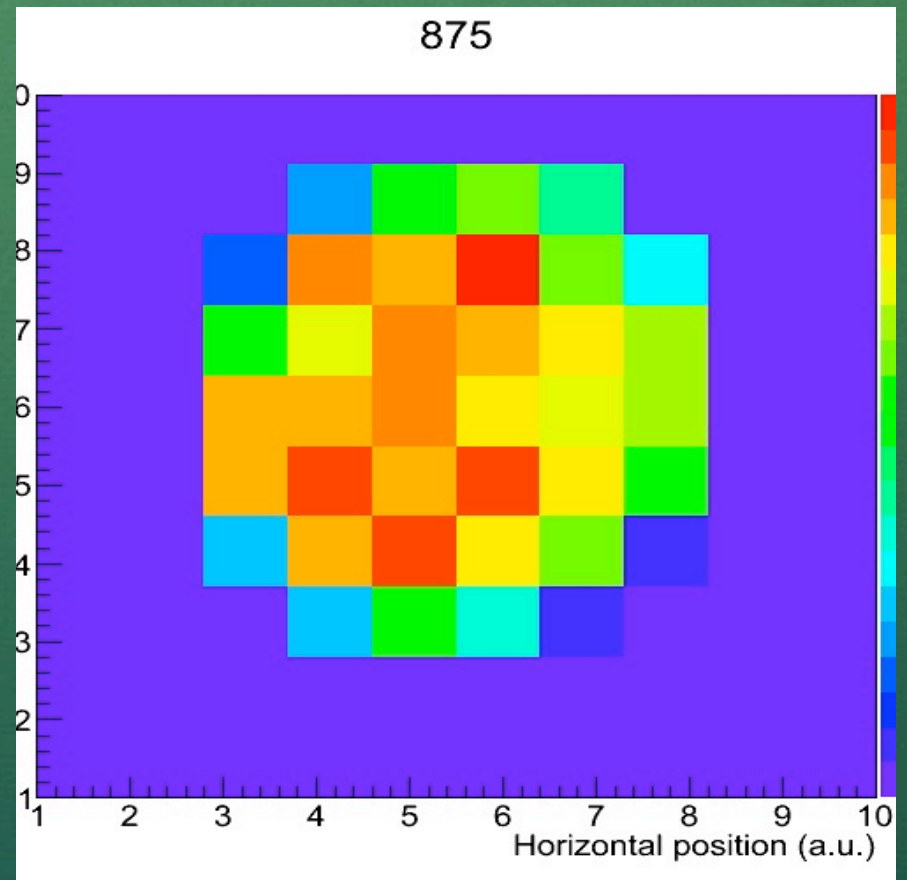
# Progress Report

Lillian Anderson

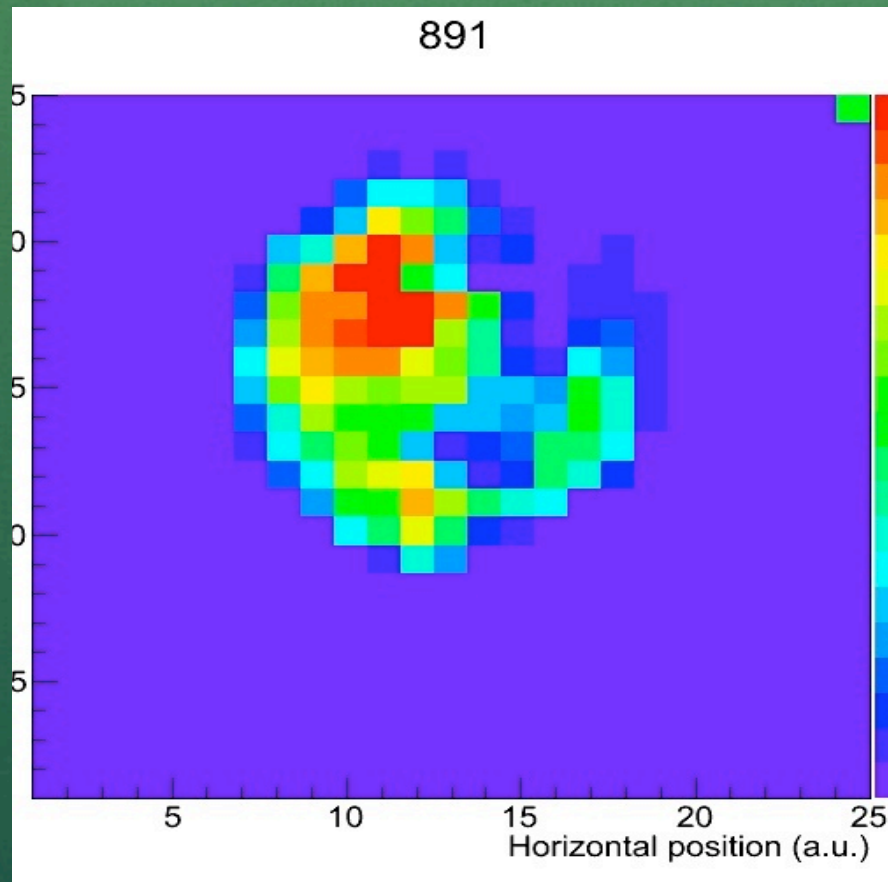
July 30, 2012

# PMT Scanning

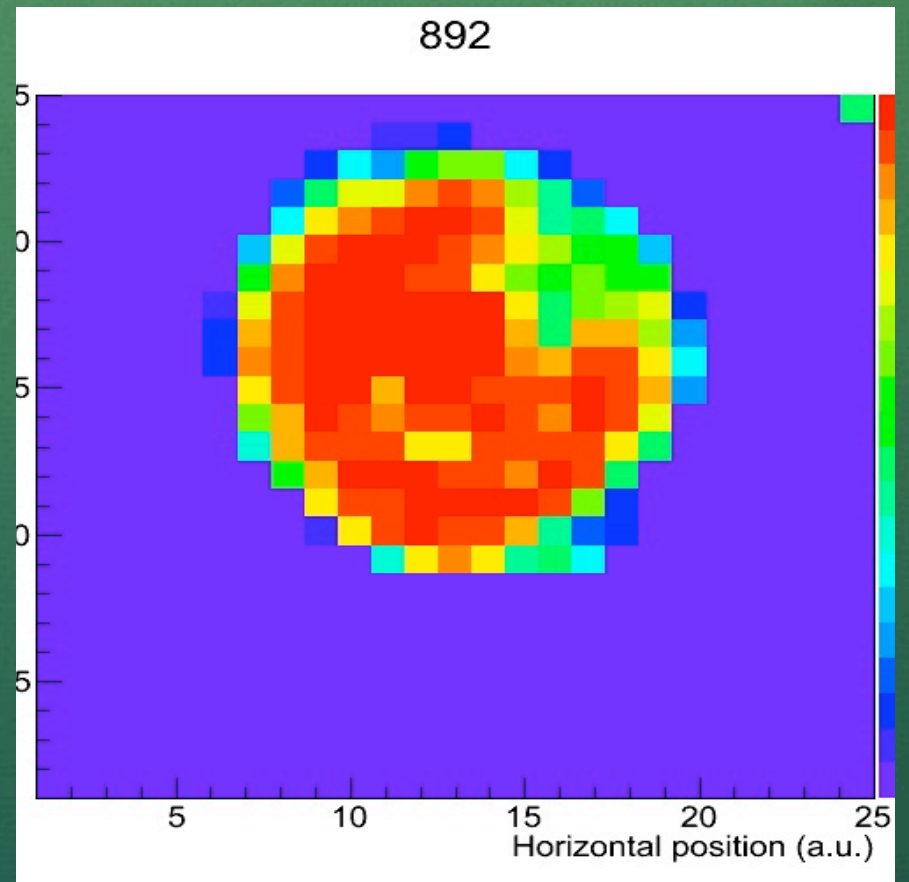
- Started scanning 2" PMTs
- Began with 10 x 10 matrix to make sure PMT was placed properly
- Used high voltage of 1.821 -kV
- Result on right
- Moved on to 25 x 25 matrix and scanning with a range of high voltages
  - From ~1.600 -kV to ~2.000 -kV



# PMT Scanning

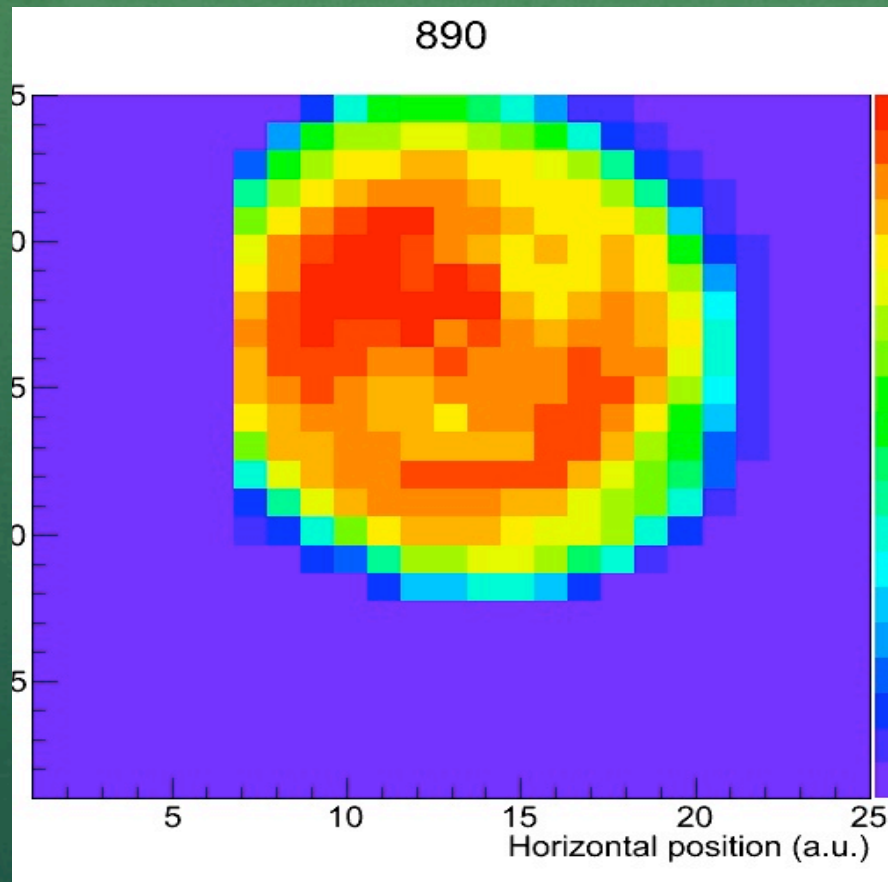


High Voltage: -1.619 kV

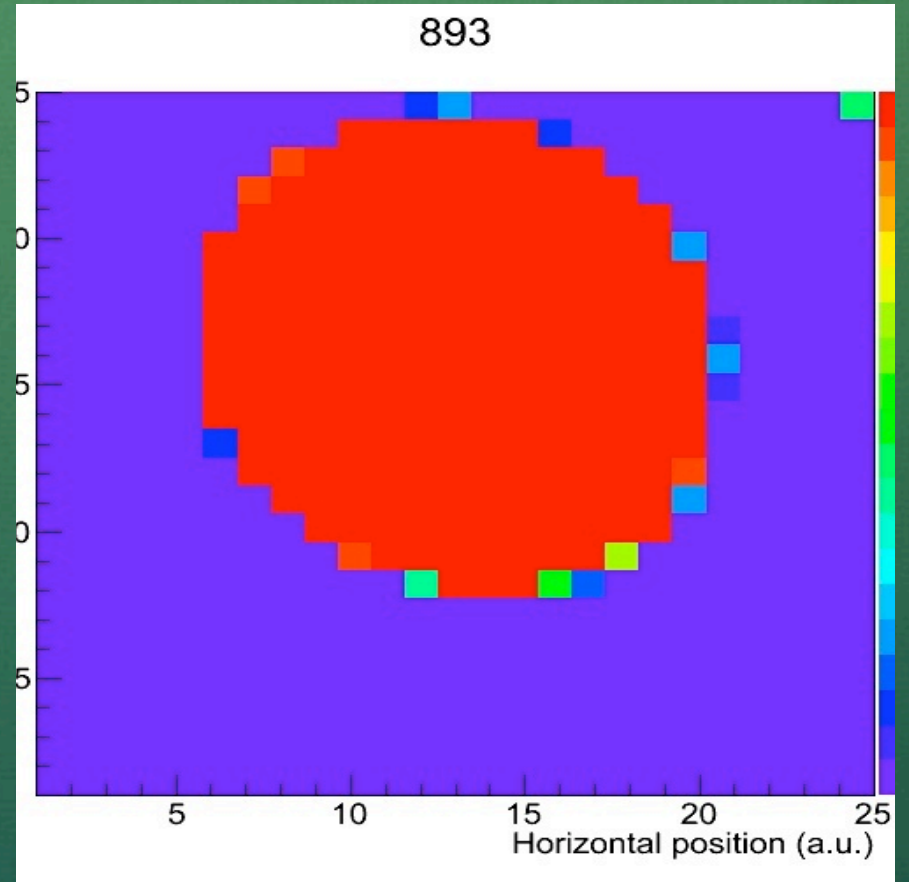


High Voltage: -1.707 kV

# PMT Scanning



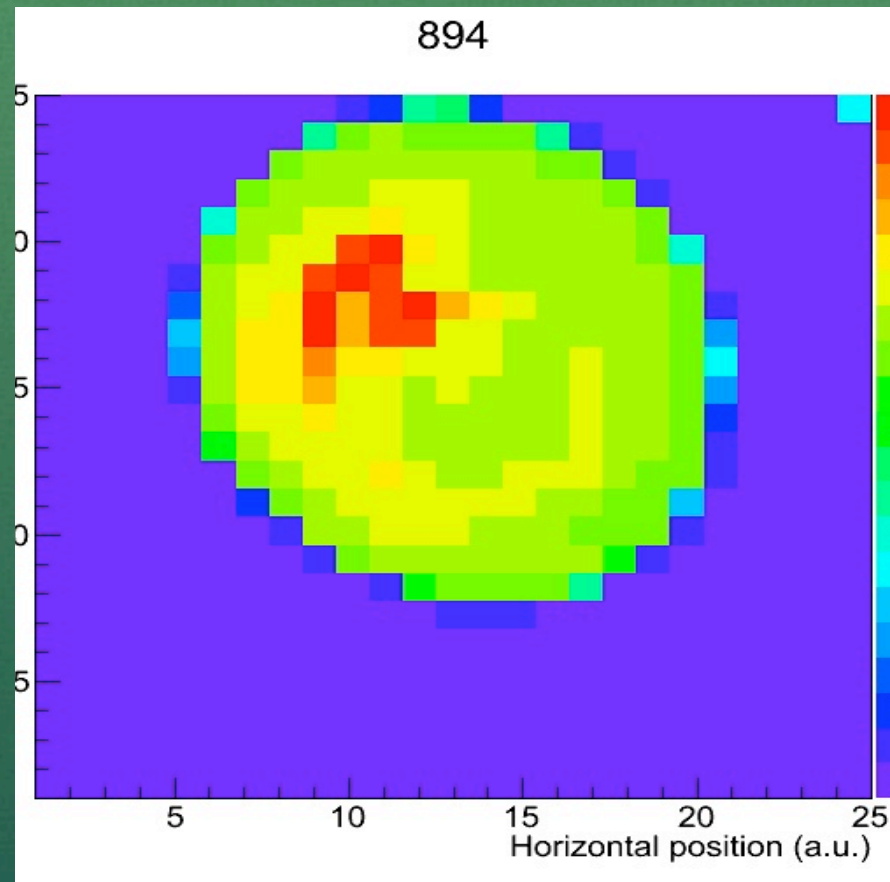
High Voltage: -1.787 kV



High Voltage: -1.898 kV

# PMT Scanning

- I will do another test at about -2.100 kV when I am able to



High Voltage: -2.007 kV