

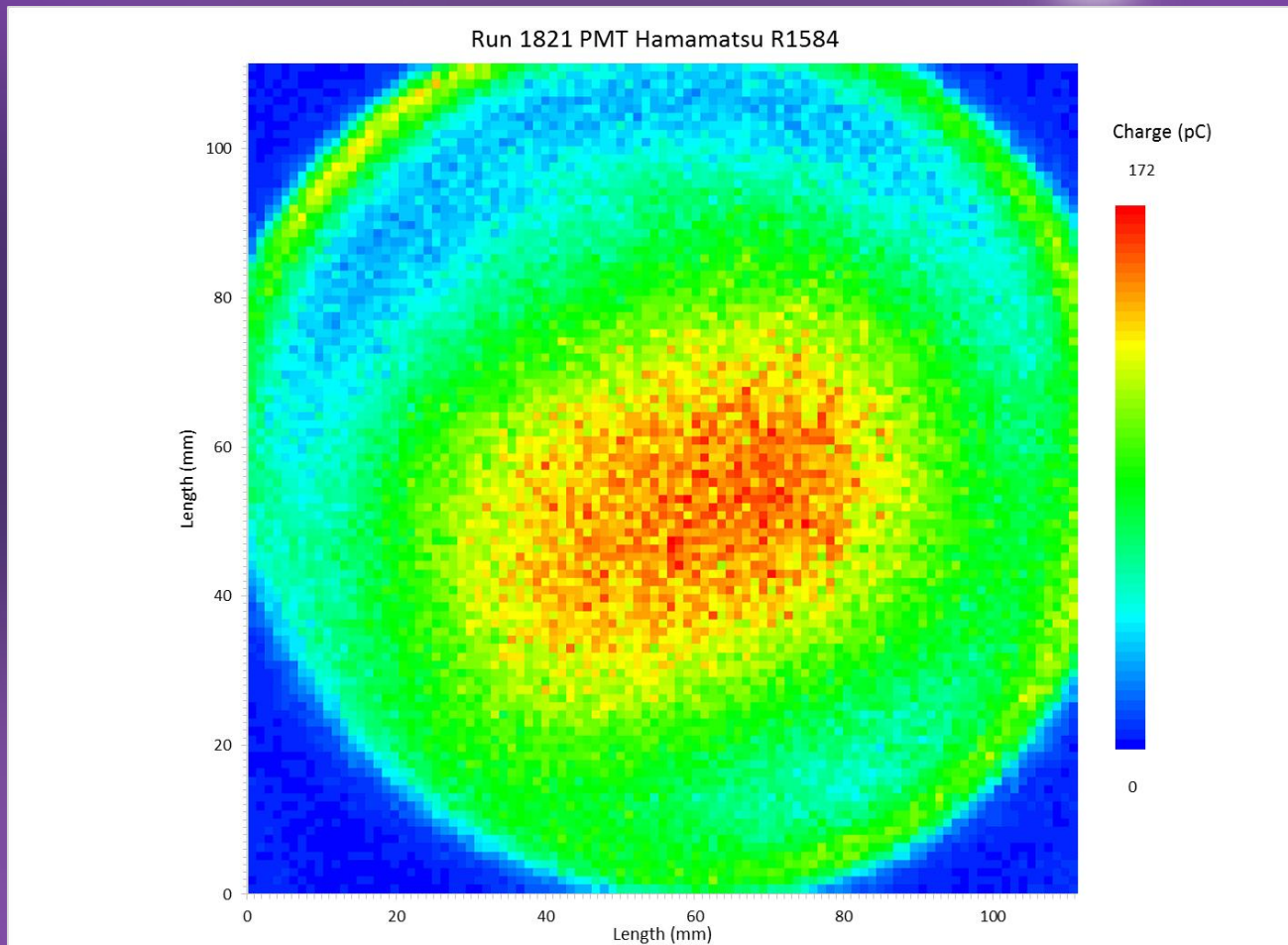
PMT Scan and Gain Update 3

07/22/14

Graph Updates

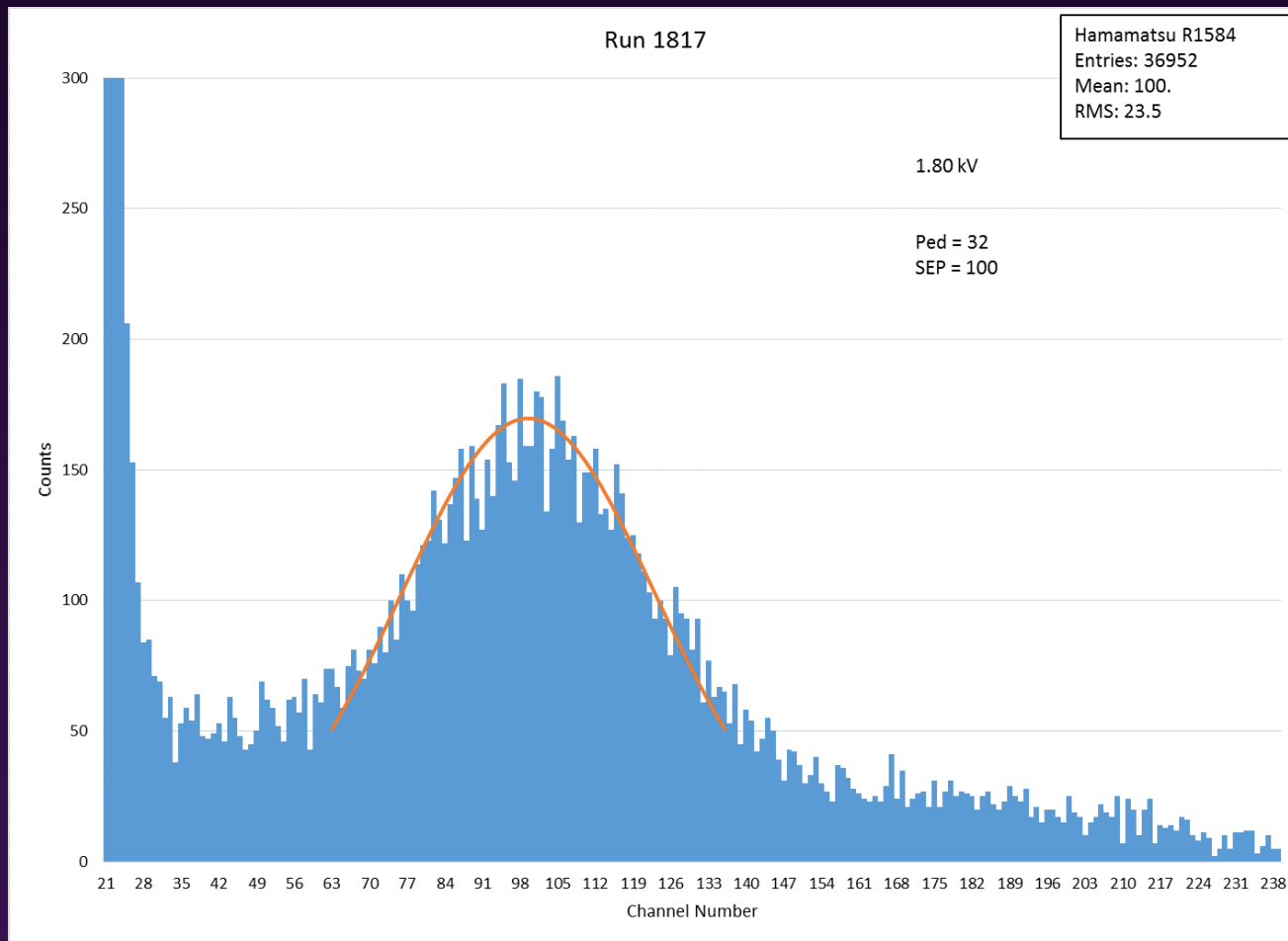
- All relevant graphs (100 x 100) updated with correct scaling of axis and charge.
- Also, they are now perfect squares rather than semi-square

UVA Data



Most likely need to redo the scan, with a slightly higher intensity

Gain Tests



Not sure how to deal with Gaussian curve, might have to look at using a different software, other than excel (too inaccurate)

Scattering Length Experimental Setup

- I'm creating an Autodesk Inventor Model of the scattering length experiment, to at the very least to put it on the wiki
- Example part for the model

