



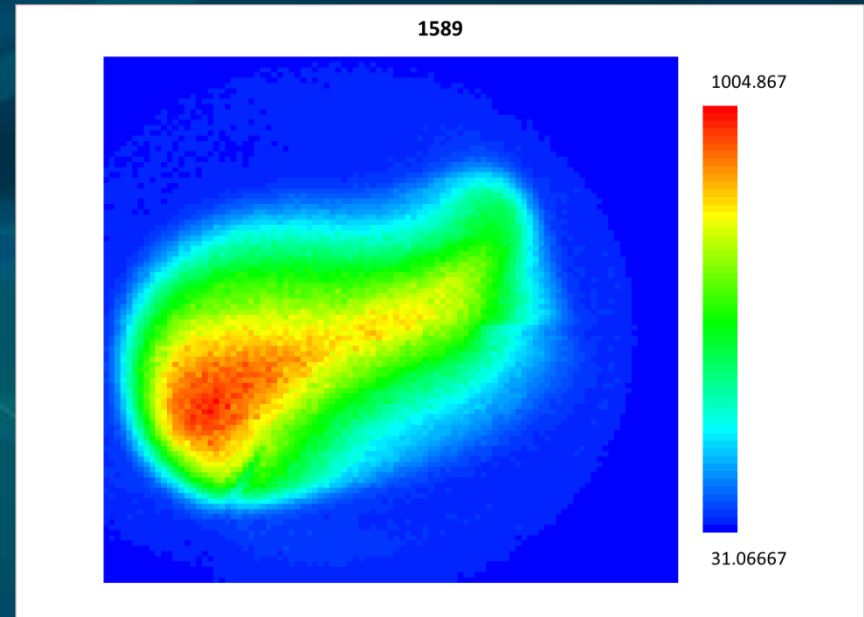
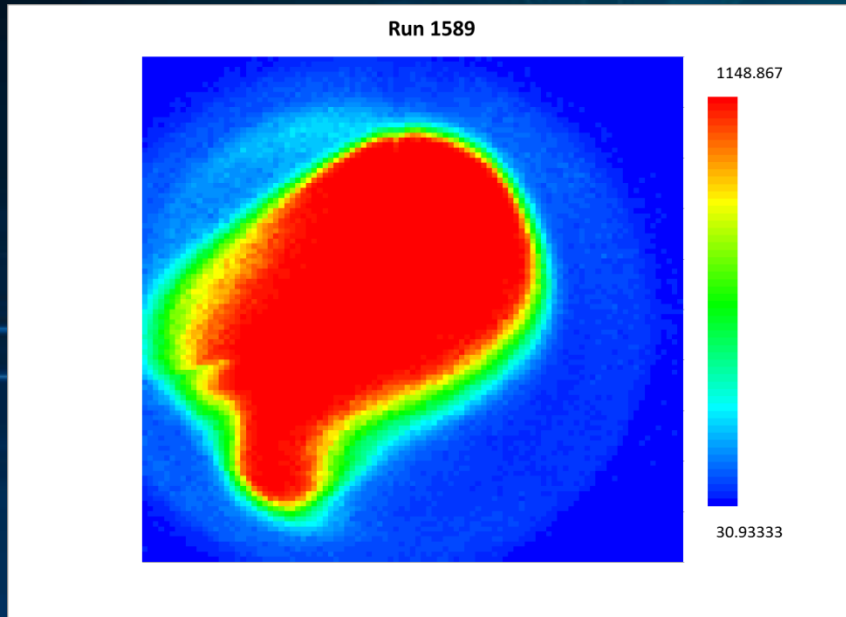
**PMT Characterization
Project Update 7/10/2014**

Scanning troubleshooting

Model XP4500/B, Serial 09641

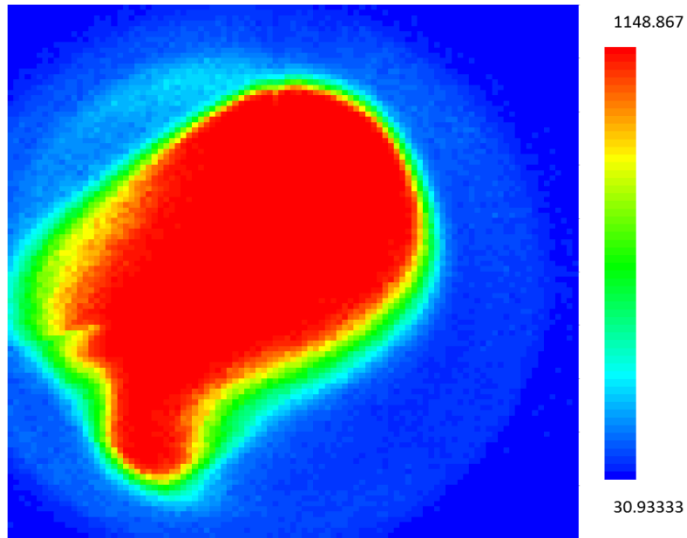
Initial Scan, -1700, High
LED intensity

Later scan, -1500 VME,
lower LED intensity,
rotated 180°

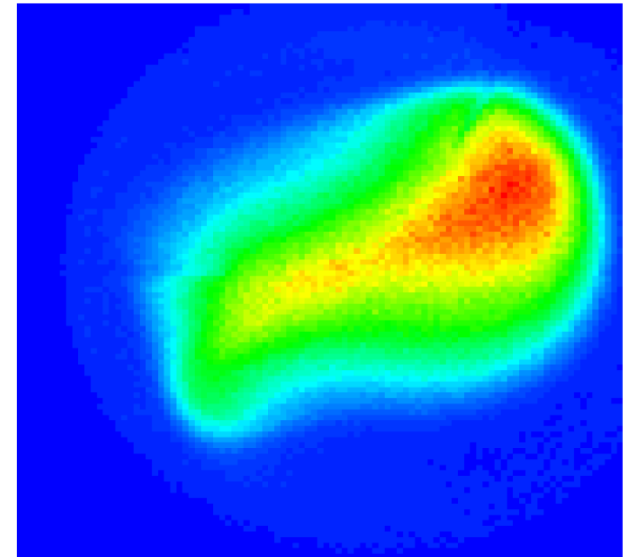


Same images, rotated to match

Run 1589

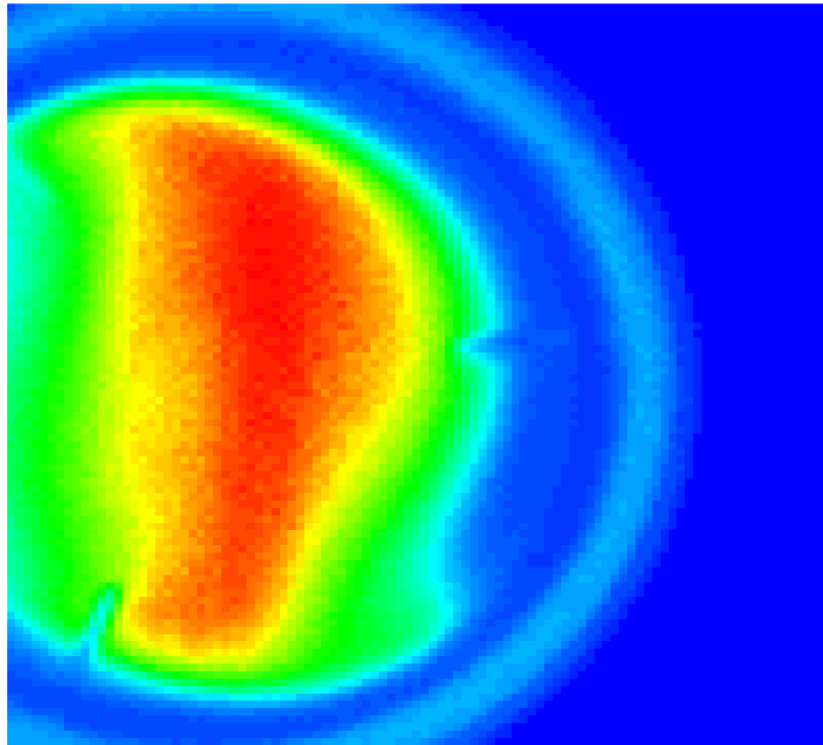


1589



1589

1597



1125

31.6

HMS Testing

Marco removed the optical fiber to prevent it from brushing up against the dome of the dome of the PMT window. Still issues with the scan, does not look like previous scans of the same PMT.

Incomplete scans

- Perhaps there is a problem with the collimator being used, or perhaps other settings are causing the discrepancy in data from a year prior. Without optimizing the experimental setup, the UVa PMT cannot be adequately tested.

Future Work

- Besides moving on to the absorption length experiment with Alex, I still need to determine the length of each step in order to quantize the graphs of the PMT and also figure out what values for current the scan yields (there is some modifier like $1=0.25 \text{ pC}$)