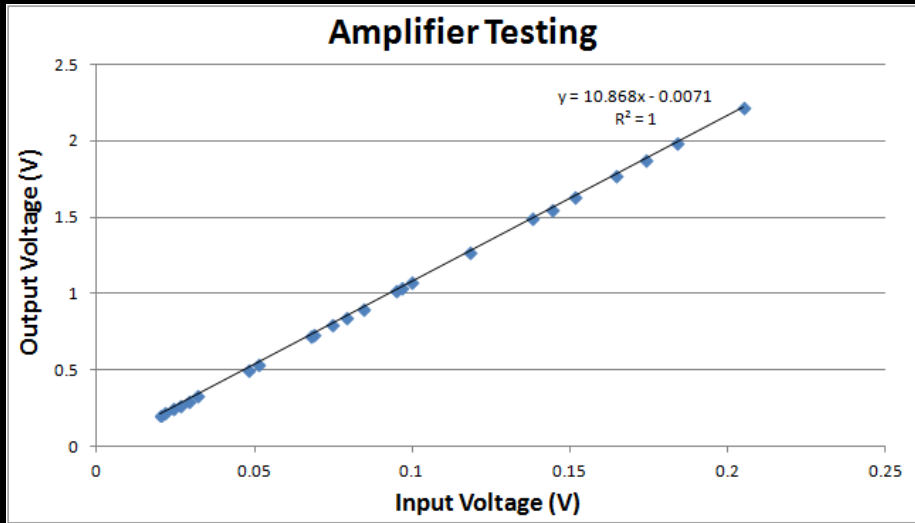




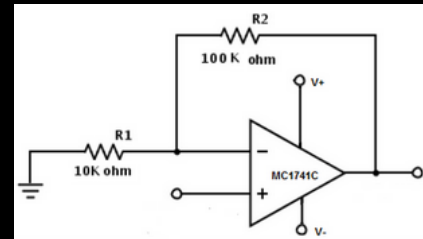
**Update 3**

**Buffy and Stephanie**

# Amplifier



- Gain ranging from 10.54 - 10.83
  - Increases slightly as input voltage increases
- Larger resistors - less fluctuation



# Changes to Setup

- Created larger blackbox
- Detector does not respond to constant LED light source
  - Switched to a pulsing AC LED
    - Multimeter set to measure in AC
    - Amplifier must be modified for AC

# Data Collection

- Pulsing LED (60.3 Hz)
- No amplifier - multimeter in millivolts and measuring AC
- Detector at a height of 8.2 cm

