

Derek Boylan & Stephanie Durham

RADIATION ON MATERIALS UPDATE

Cosmic Ray Detector

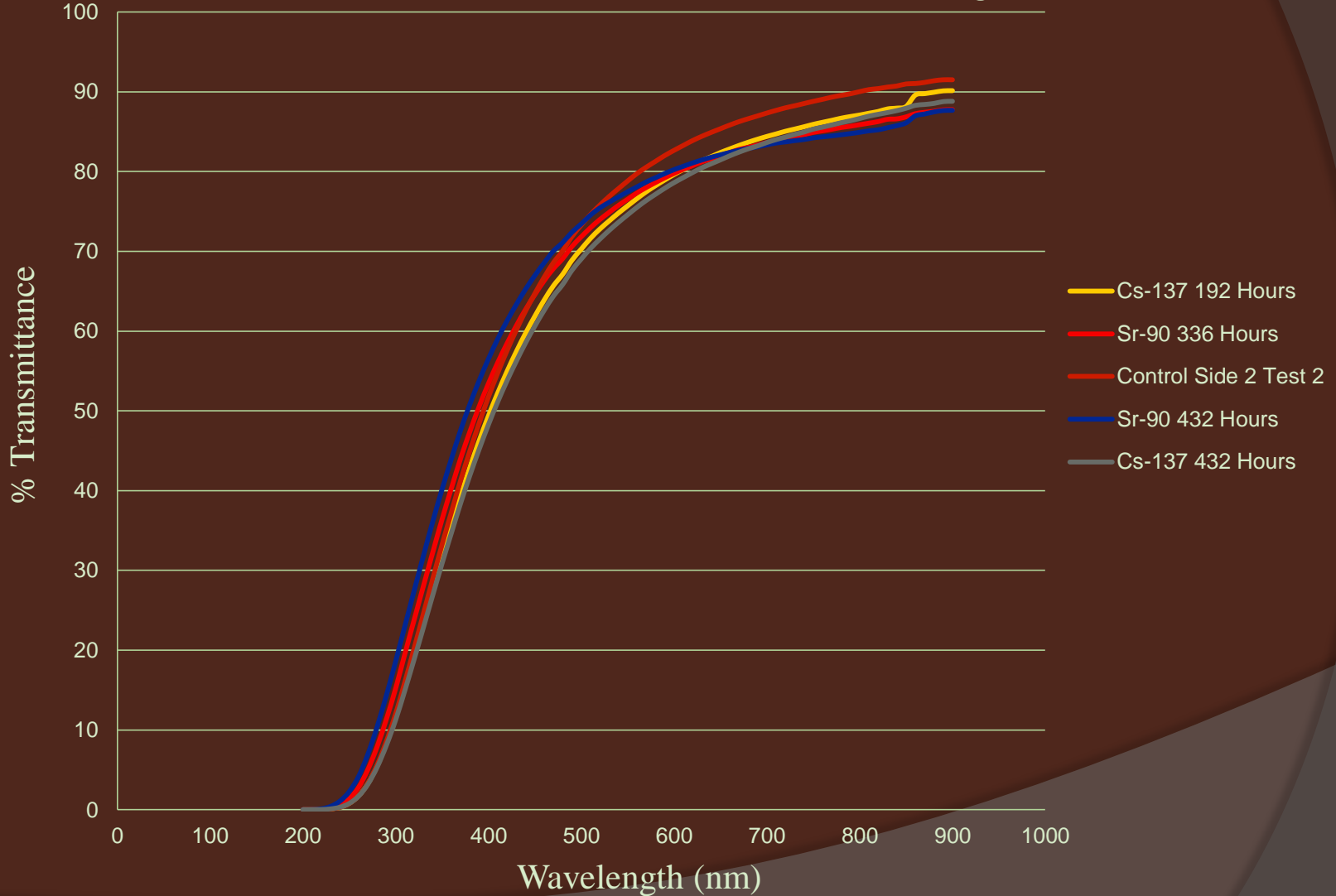
- Two of the four trigger efficiency tests are done
 - Paddles 1 & 2, paddles 2 & 3

	Time (Hours)	Computer		Module		Mean Counts		Standard Deviation	Percent Error (Top vs. Middle)	Dead Time
		Counts	Counts /Min	Counts	Counts /Min					
Top and Middle	18.0	1469	1.36	1486	1.37	1477.5	1.37	8.5	15%	1%
Middle and Bottom	24.7			1720	1.16	1720	1.16	0	17%	

- Delayed due to the scintillator and PMT detaching
- Test with all three paddles will take place over the weekend

Radiation & Aerogel

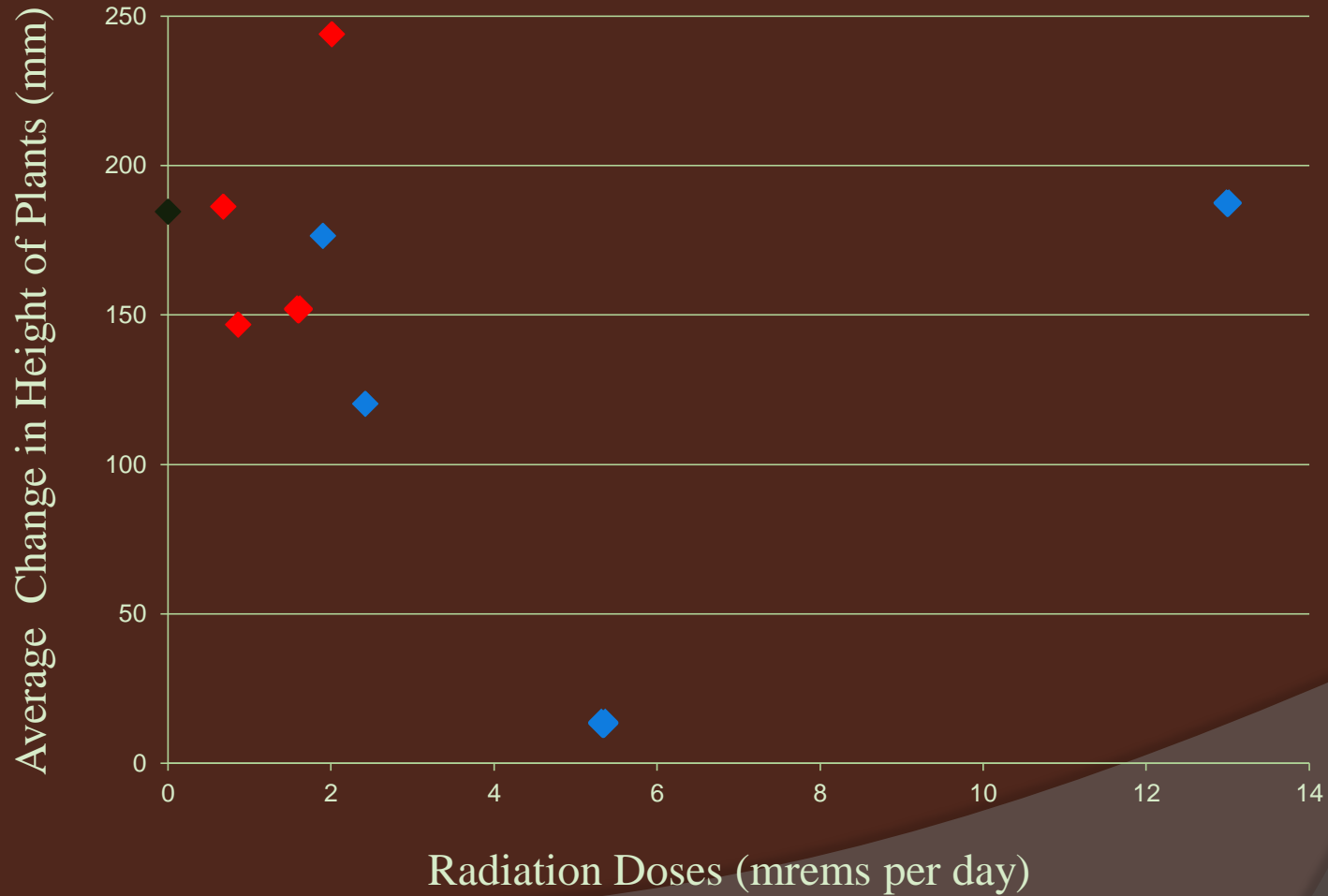
% Transmission at Different Wavelengths



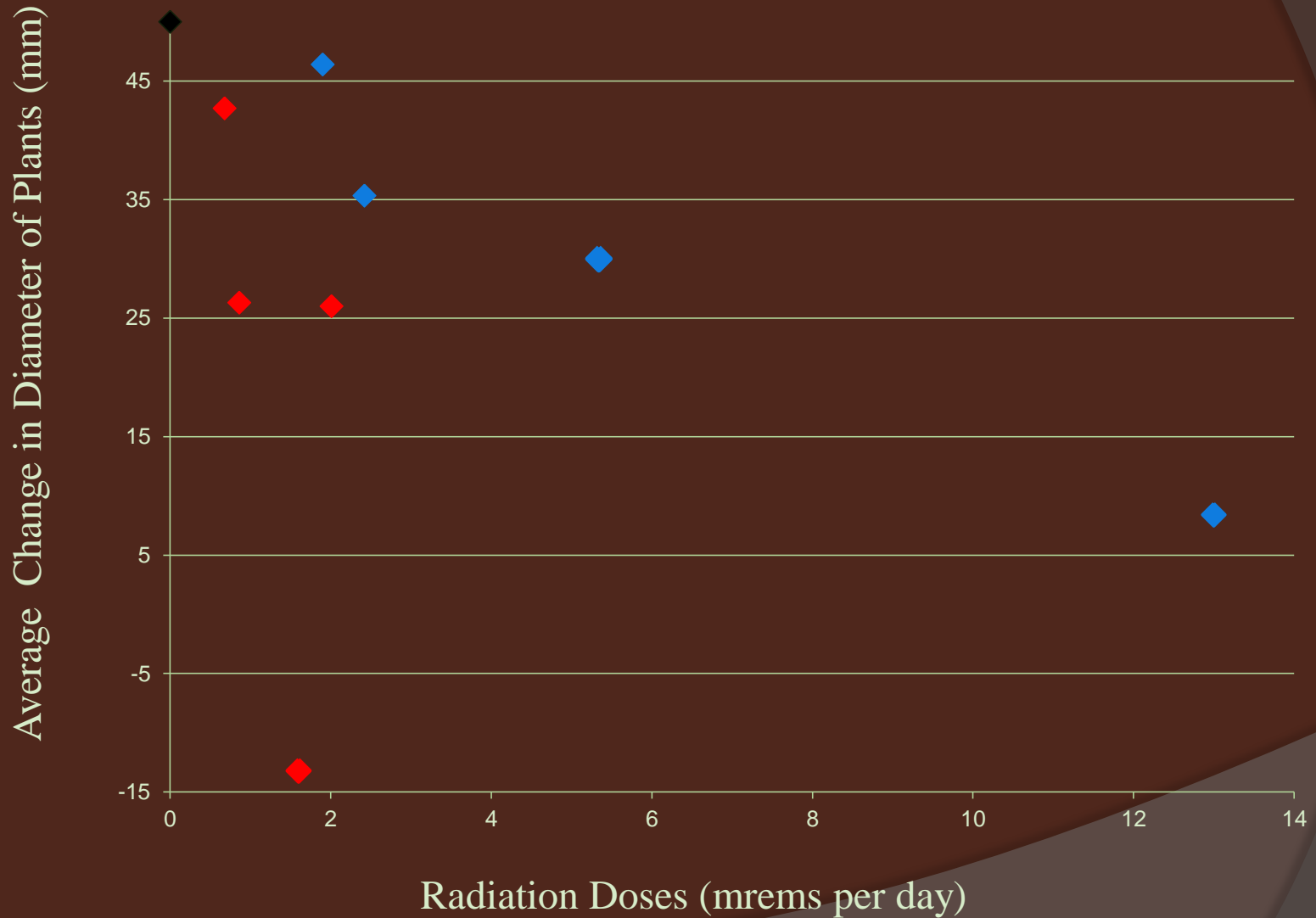
- Essentially there was no change in transmittance

Radiation & Bean Plants

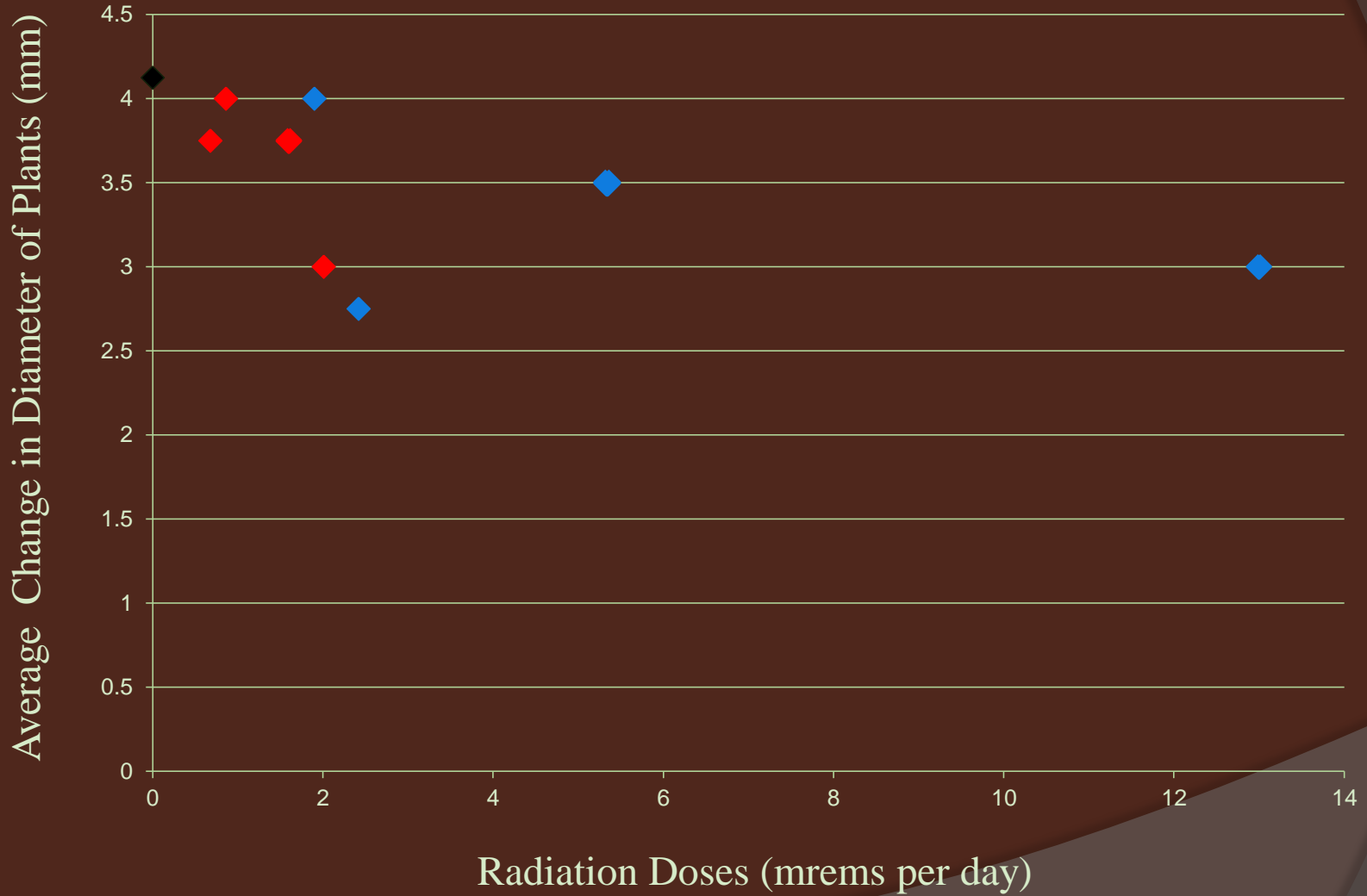
Change in Average Height of Plants



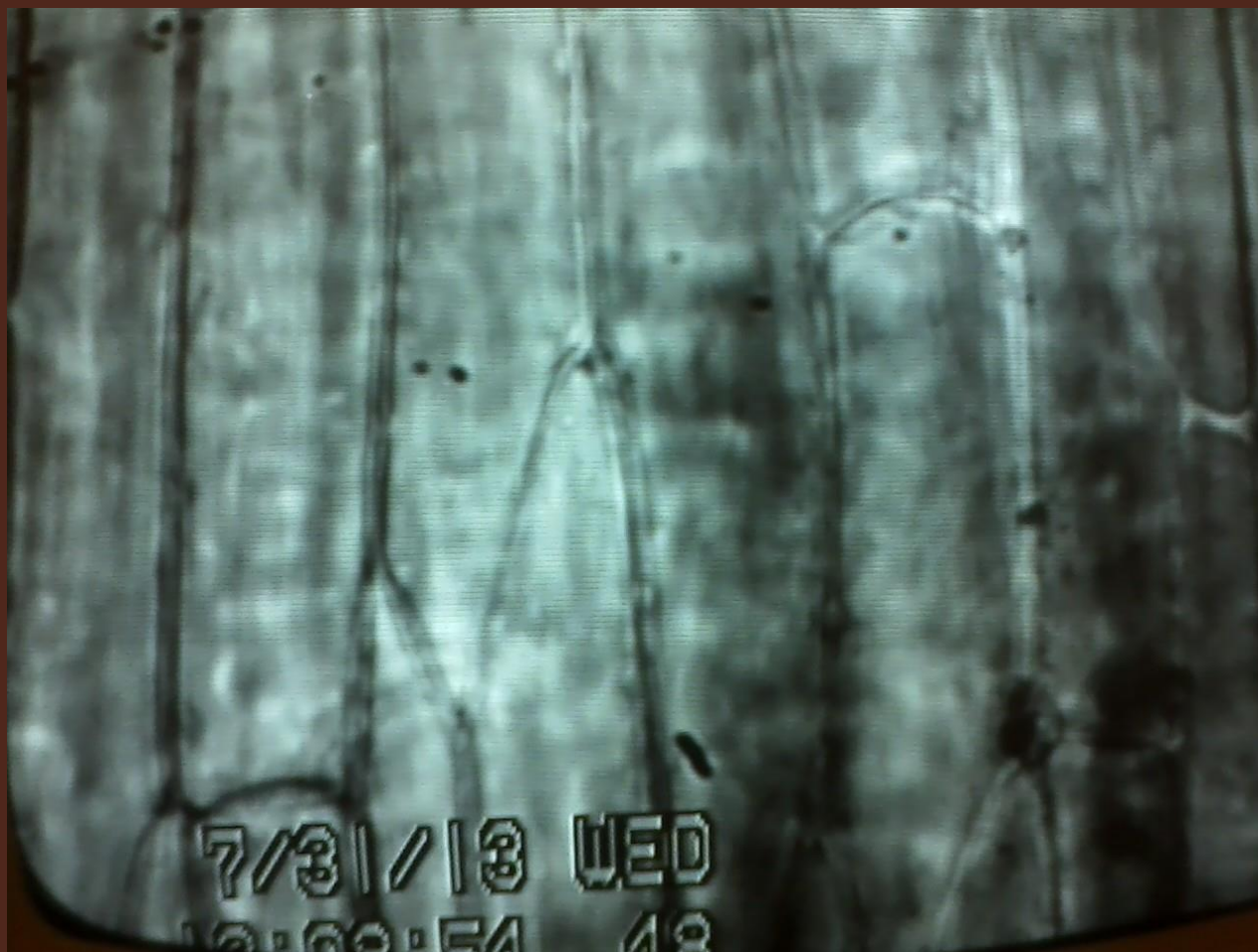
Change in Average Diameter of Plants



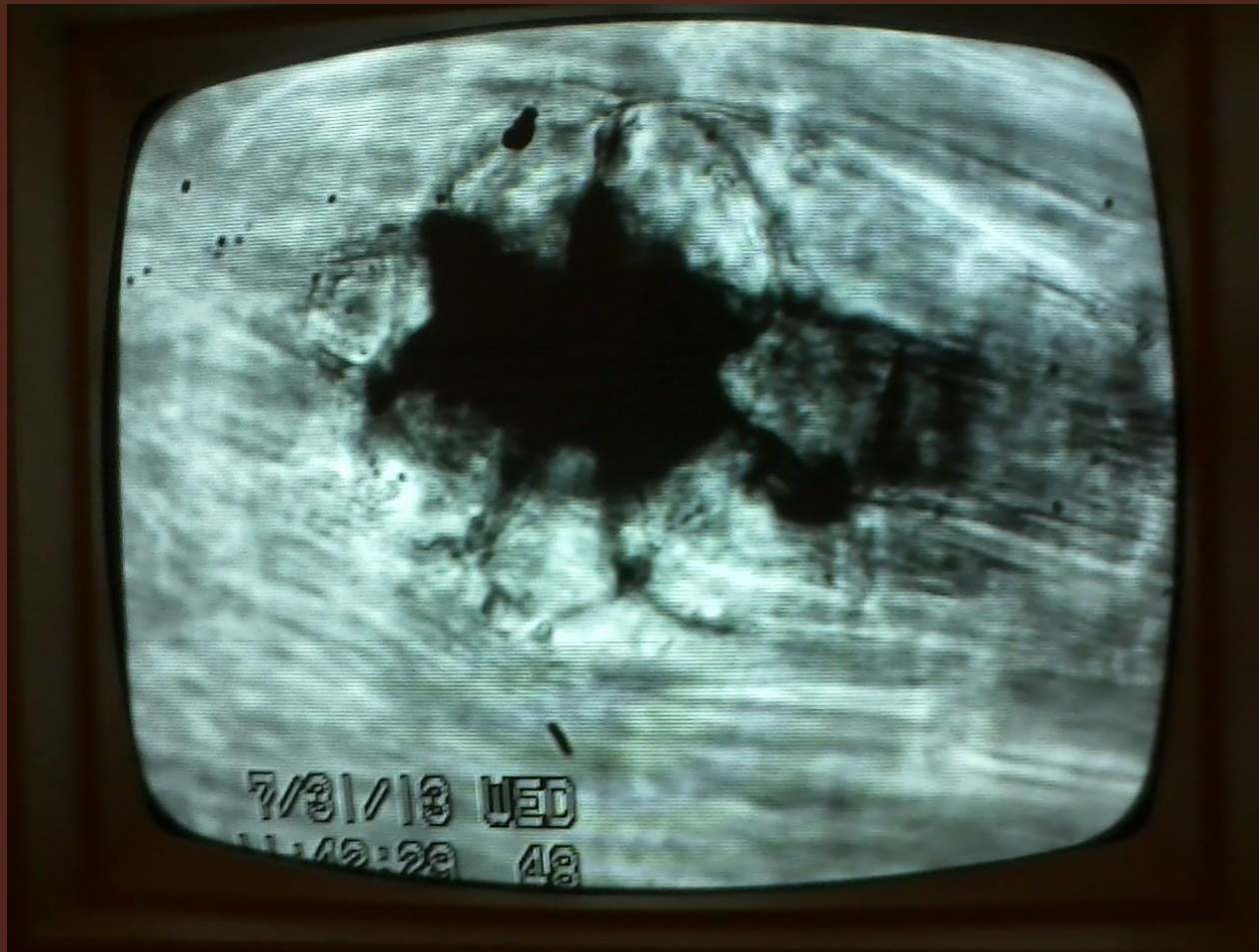
Change in Average Number of Leaves of Plants



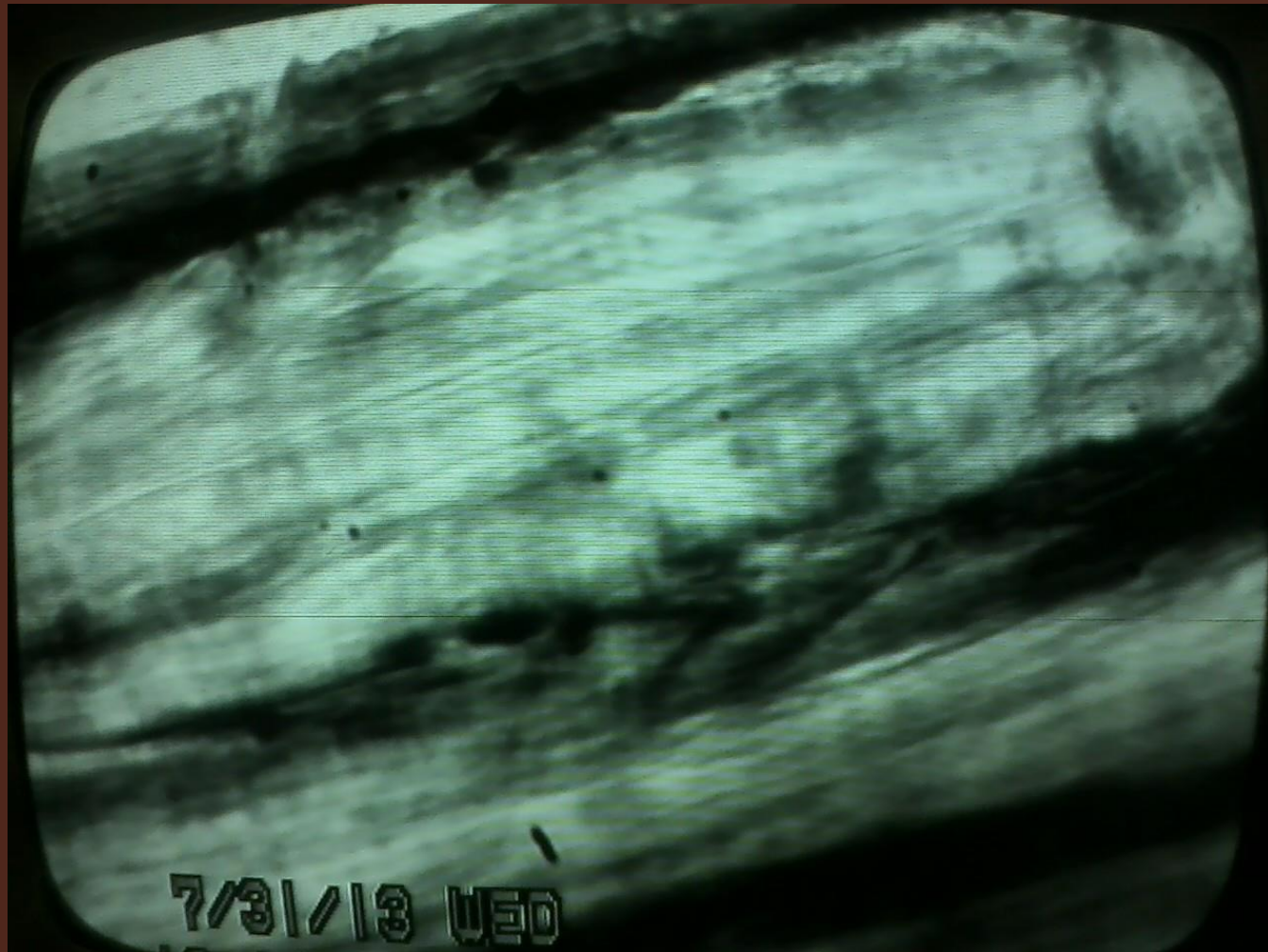
Control



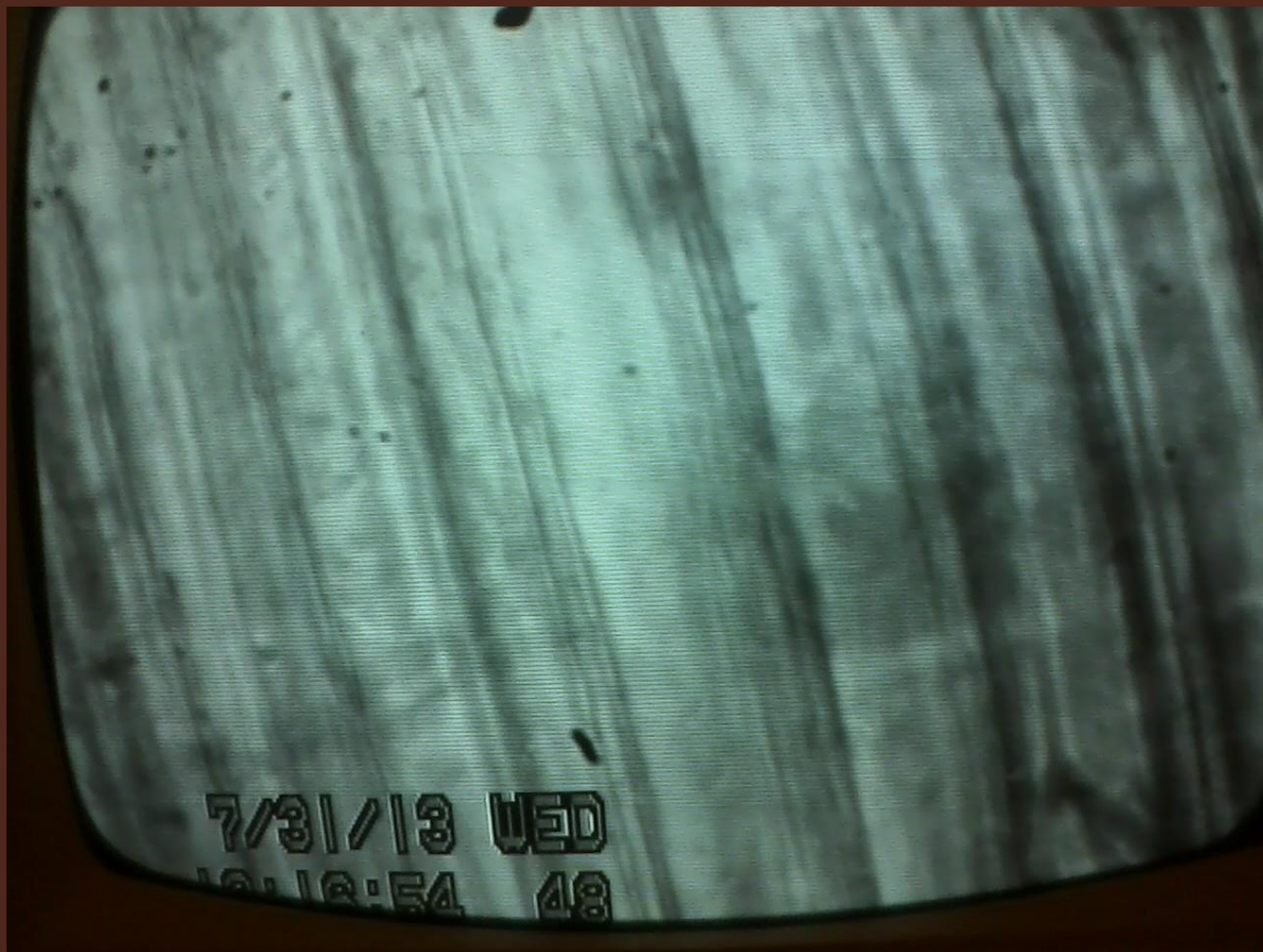
Cell Clump – Control



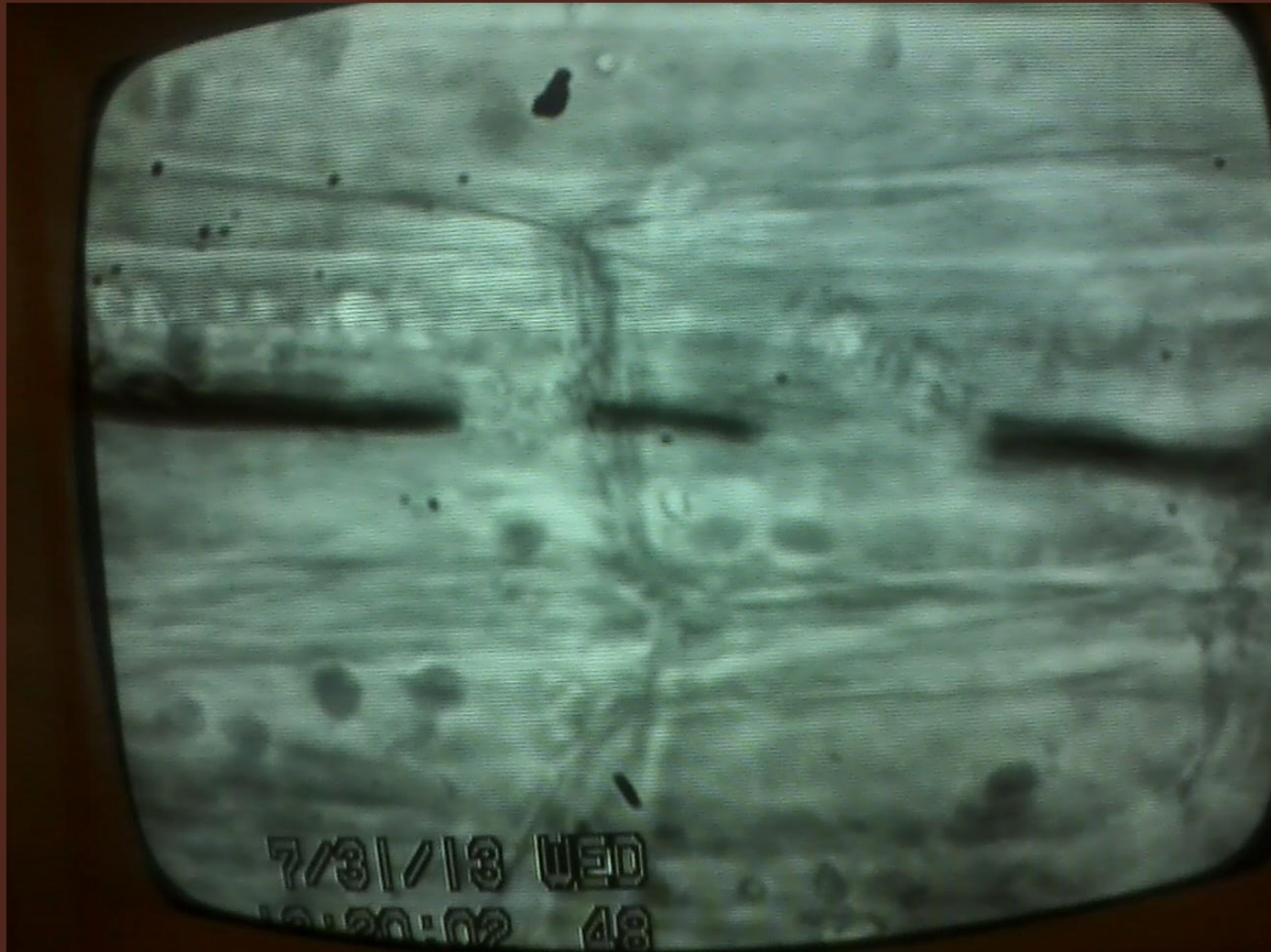
1A



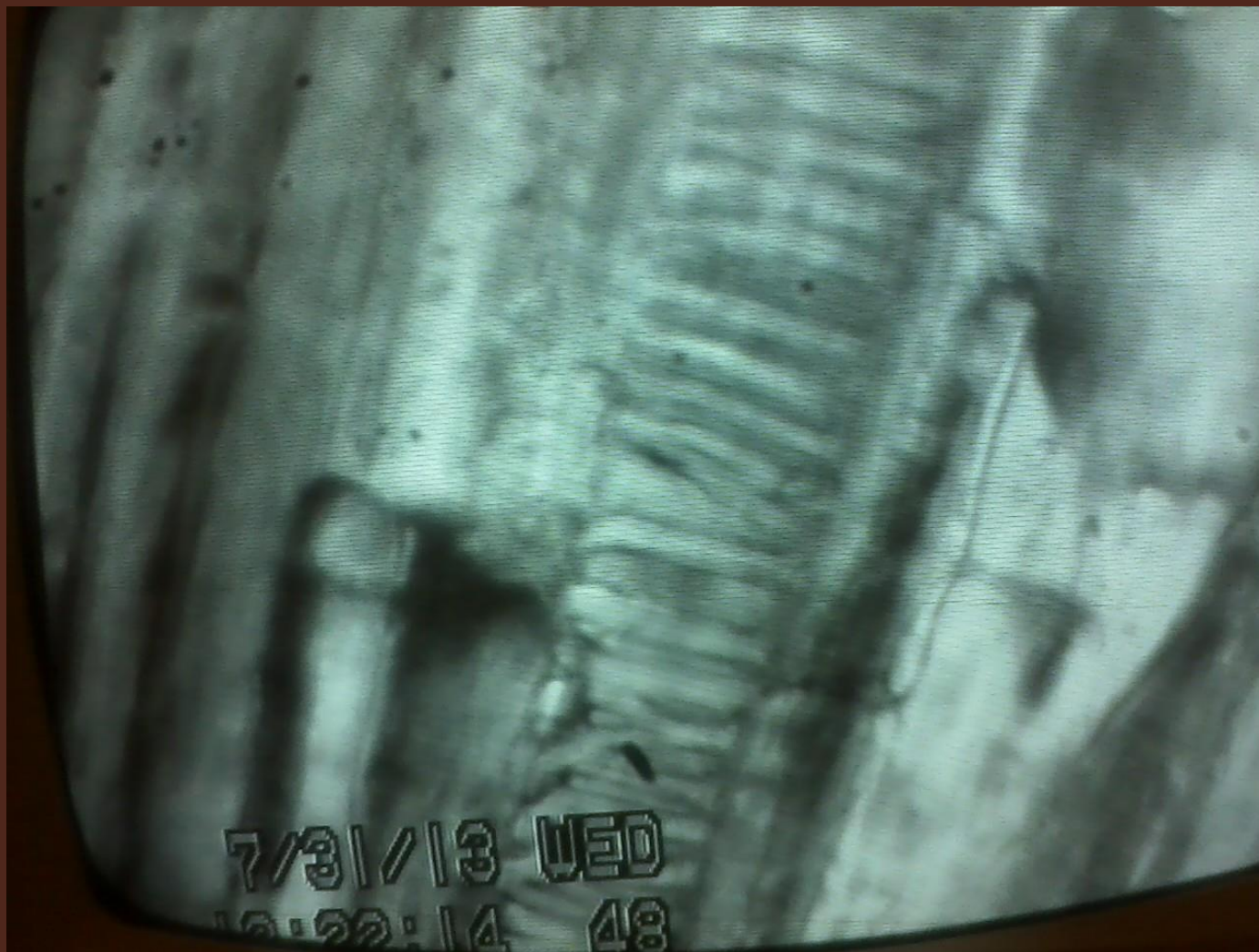
1B



1C



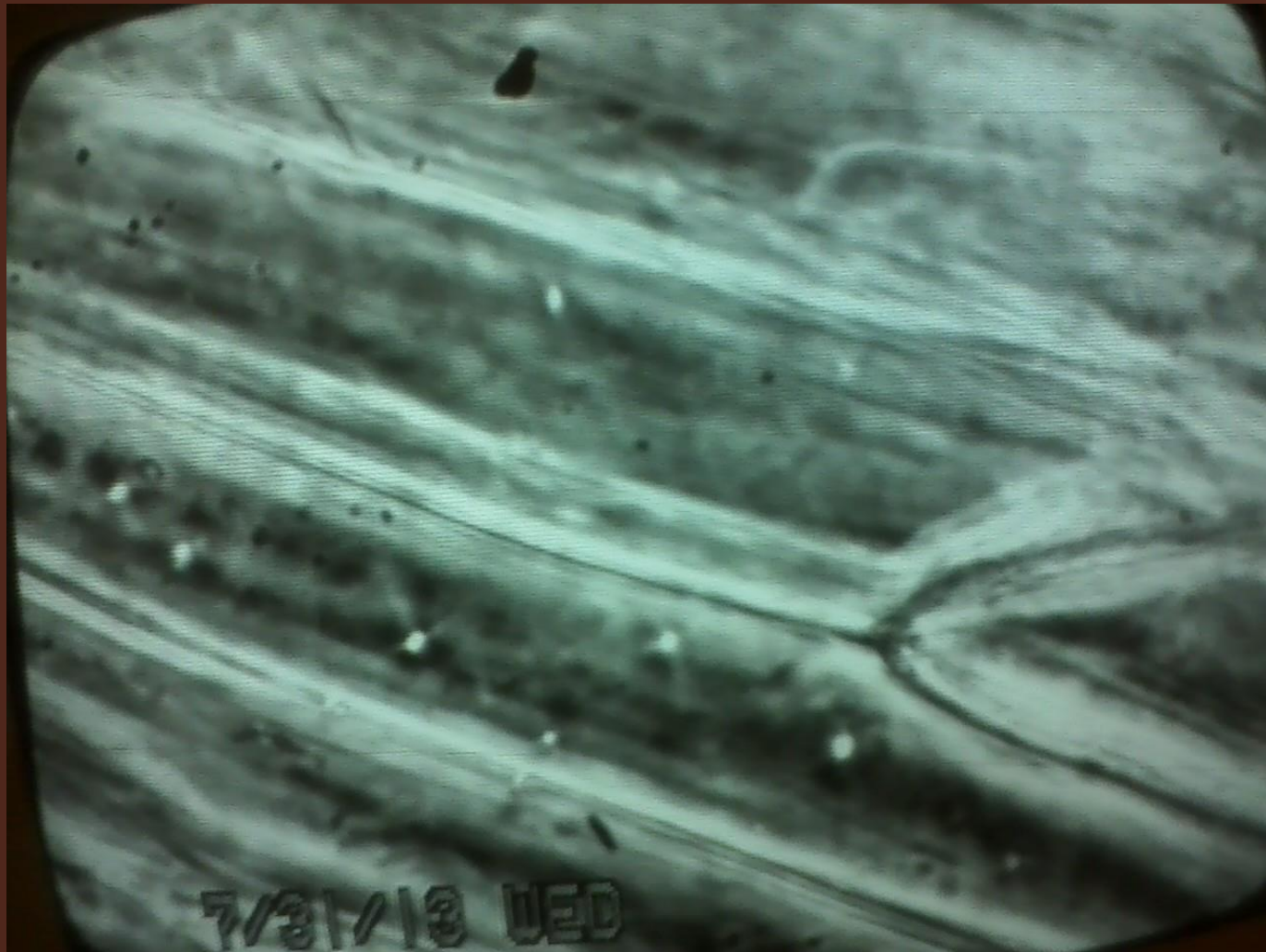
Unknown in 2A



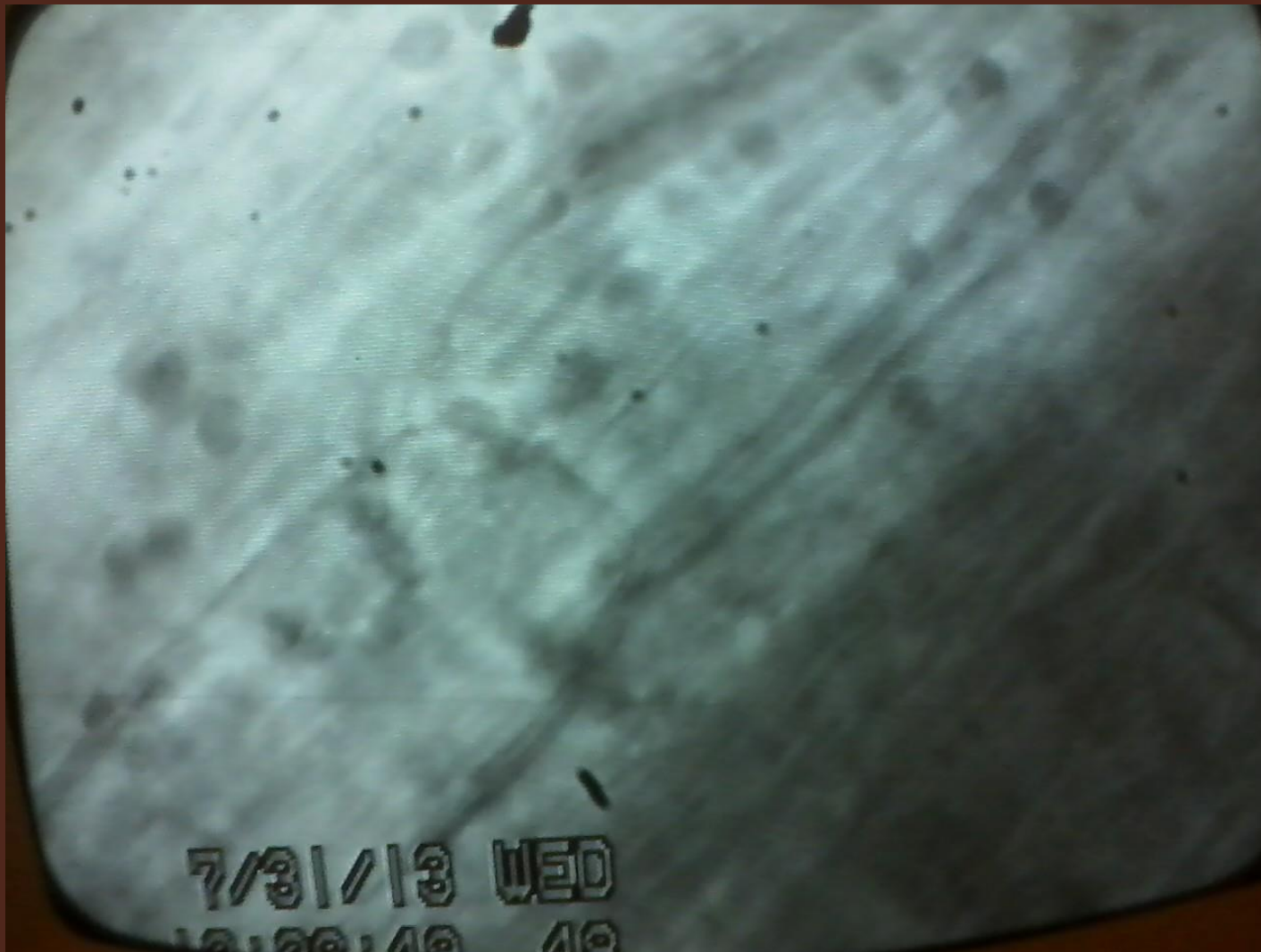
Unknown #2 in 2A



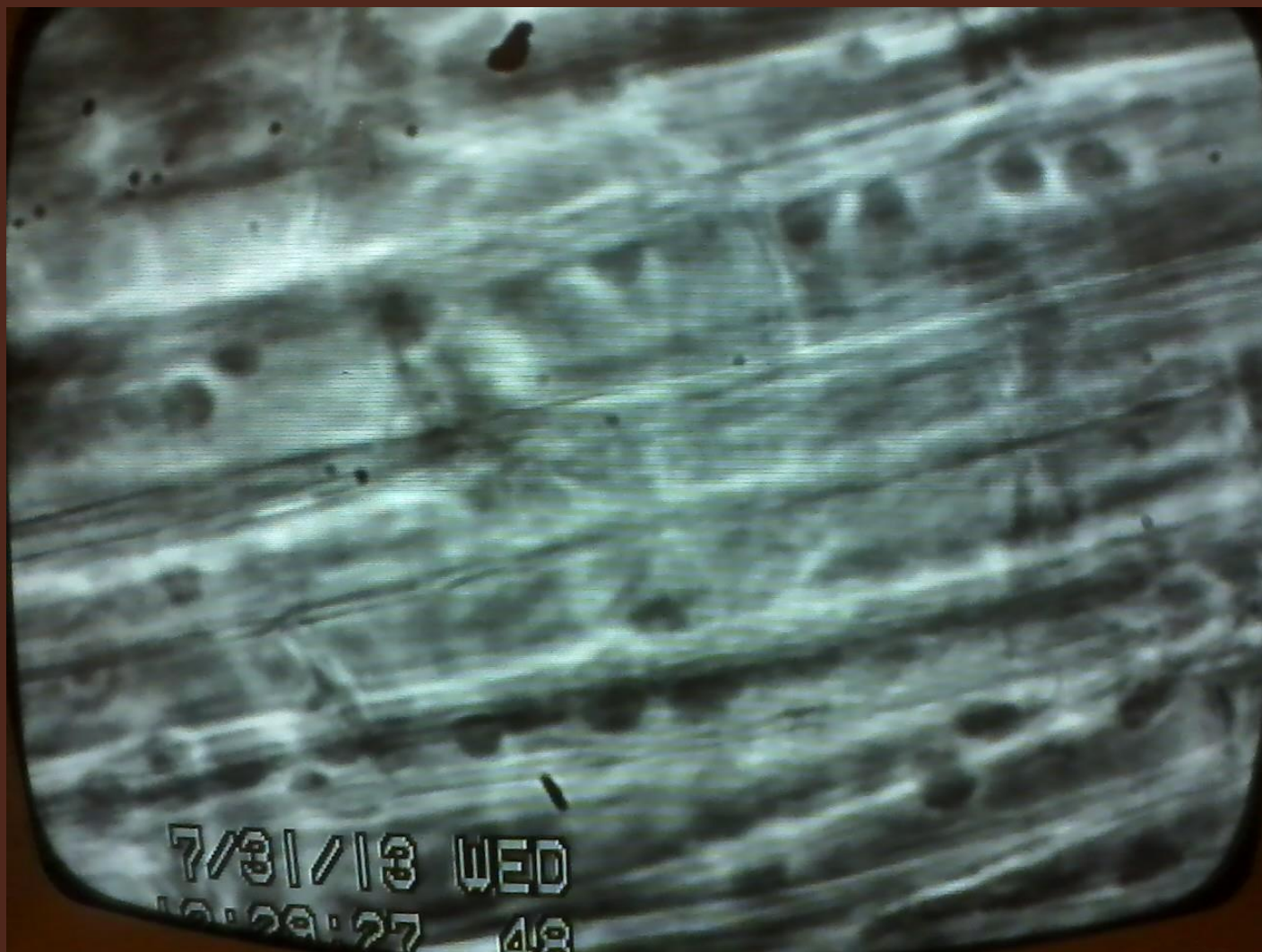
Movement in 2B



3A



4A



4B

